

# FX BOLT

## System Manual

### **Risk warning**

Before you begin trading on Real account please carefully consider your investment goals, risk and experience you have. It should be noted that Forex is a leverage based market. It should be remembered that leverage can work both in your advantage and disadvantage as well. Therefore there is high risk of losing a part or all of your financial input placed on your account and because of that you should remember to trade with the amount of money which you can lose without taking any influential financial damage.

### **Disclaimer**

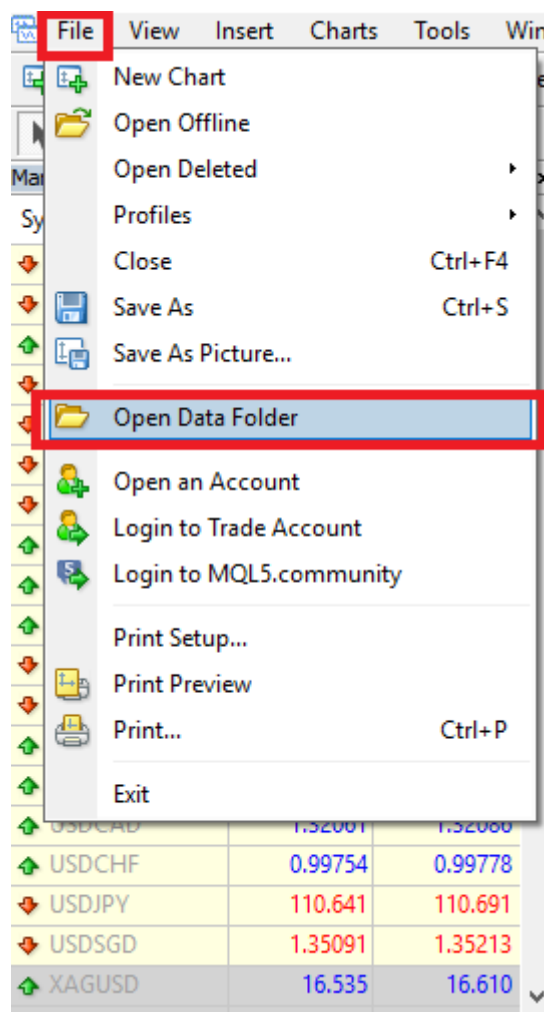
Signals generated by the system are not investment recommendations. All materials included on the website, as well as all system components (indicators, instruction manual) are for educational purposes only. Creators of the system will not take any responsibility for any profit or loss/damage caused by using the system.

**Copyright © 2021 All rights reserved.**

Unless otherwise indicated, all materials on these pages are copyrighted by the fxvector.net. All rights reserved. No part of these pages, either text or image may be used for any purpose other than personal use. Therefore, reproduction, modification, in any form or by any means, electronic, or otherwise, for reasons other than personal use, is strictly prohibited without prior written permission.

# 1. Installation proces.

- Open your MT4
- Click 'File/Open Data Folder' from the top tab.



- Copy templates files to the 'Templates' folder.

config	15.06.2018 14:09
history	08.05.2018 16:03
logs	16.06.2018 09:40
MQL4	08.05.2018 16:01
profiles	13.06.2018 10:20
templates	15.06.2018 22:52
tester	13.06.2018 10:44
origin	08.05.2018 16:01

- Copy indicator files to the 'MQL4>Indicators' folder.

Experts	08.05.2018 16:02
Files	08.05.2018 16:01
Images	08.05.2018 16:01
Include	08.05.2018 16:01
Indicators	15.06.2018 22:29
Libraries	08.05.2018 16:02
Logs	16.06.2018 09:40
Presets	08.05.2018 16:01
Projects	08.05.2018 16:01
Scripts	08.05.2018 16:02

- Restart your MT4

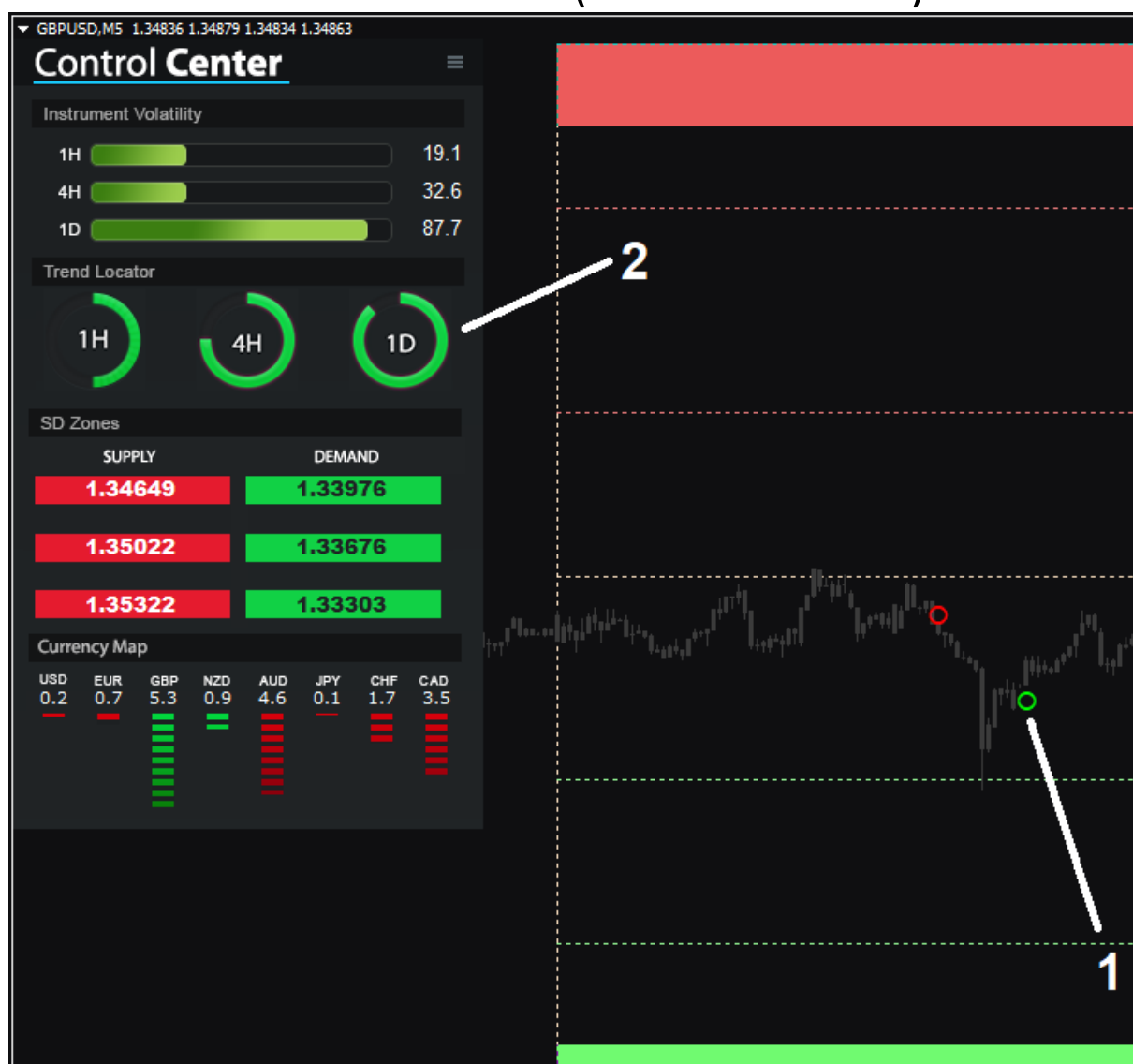
**PLEASE USE THE SYSTEM TEMPLATE TO LOAD UP THE INDICATORS  
ON YOUR CHART AS IT WILL SET THE COLORS AND SYSTEM  
SETTINGS IN CORRECT WAY!**



FX BOLT software contains 3 main parts.

- Control Center
- Supply/Demand levels
- Entry Indicator

## ENTRY EXAMPLE (BASIC ANALYSIS)



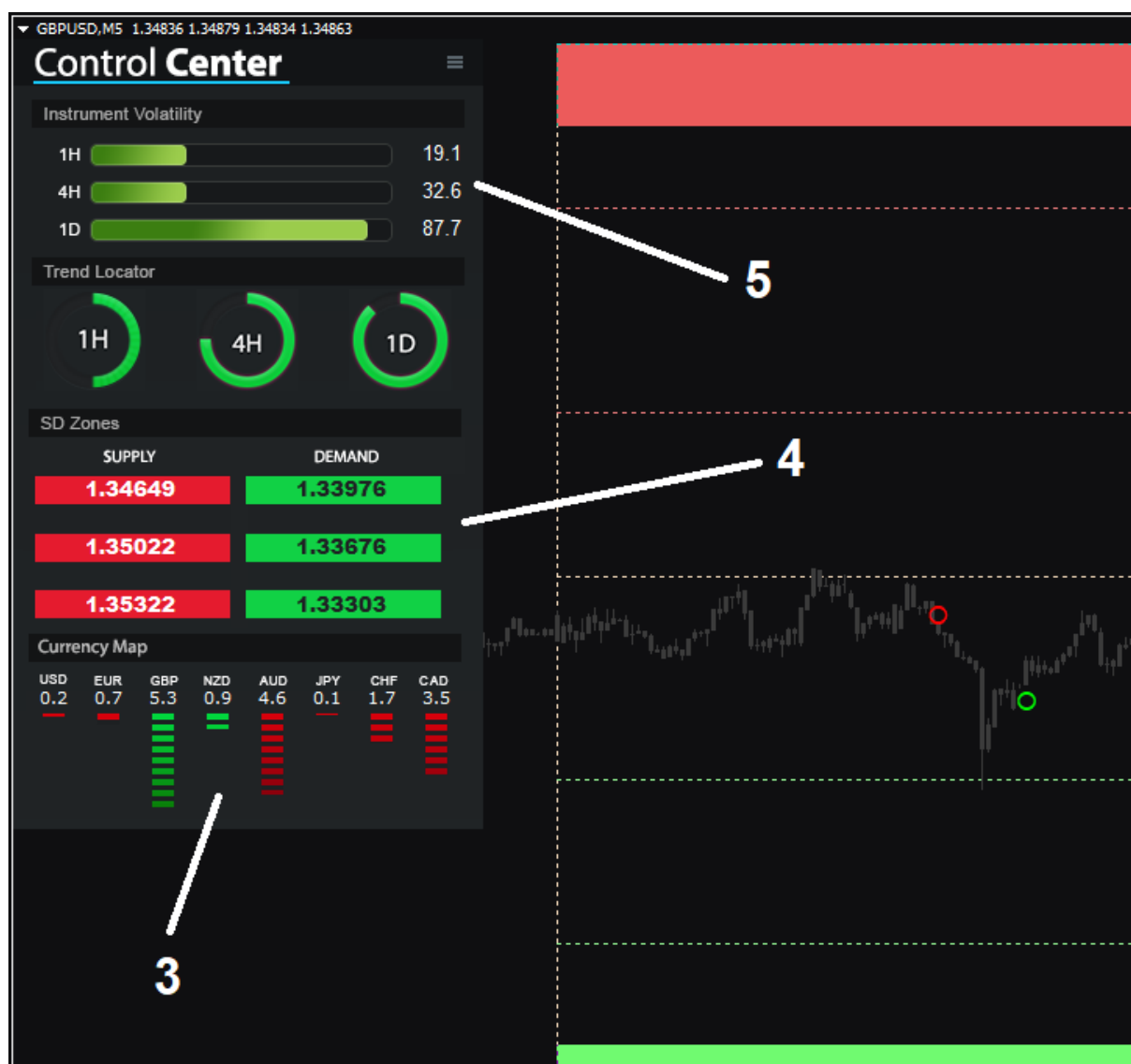
The basic analysis includes two system elements.

1. Entry.
2. MTF Confirmation.

When buy signal pops up and it's in line with all 3 higher TF it's a valid BUY signal.

The same goes for SELL signal. If you will see red circle on the chart, and all 3 TFs in the the trend locator are red (1H, 4H, 1D) it's a valid SELL signal.

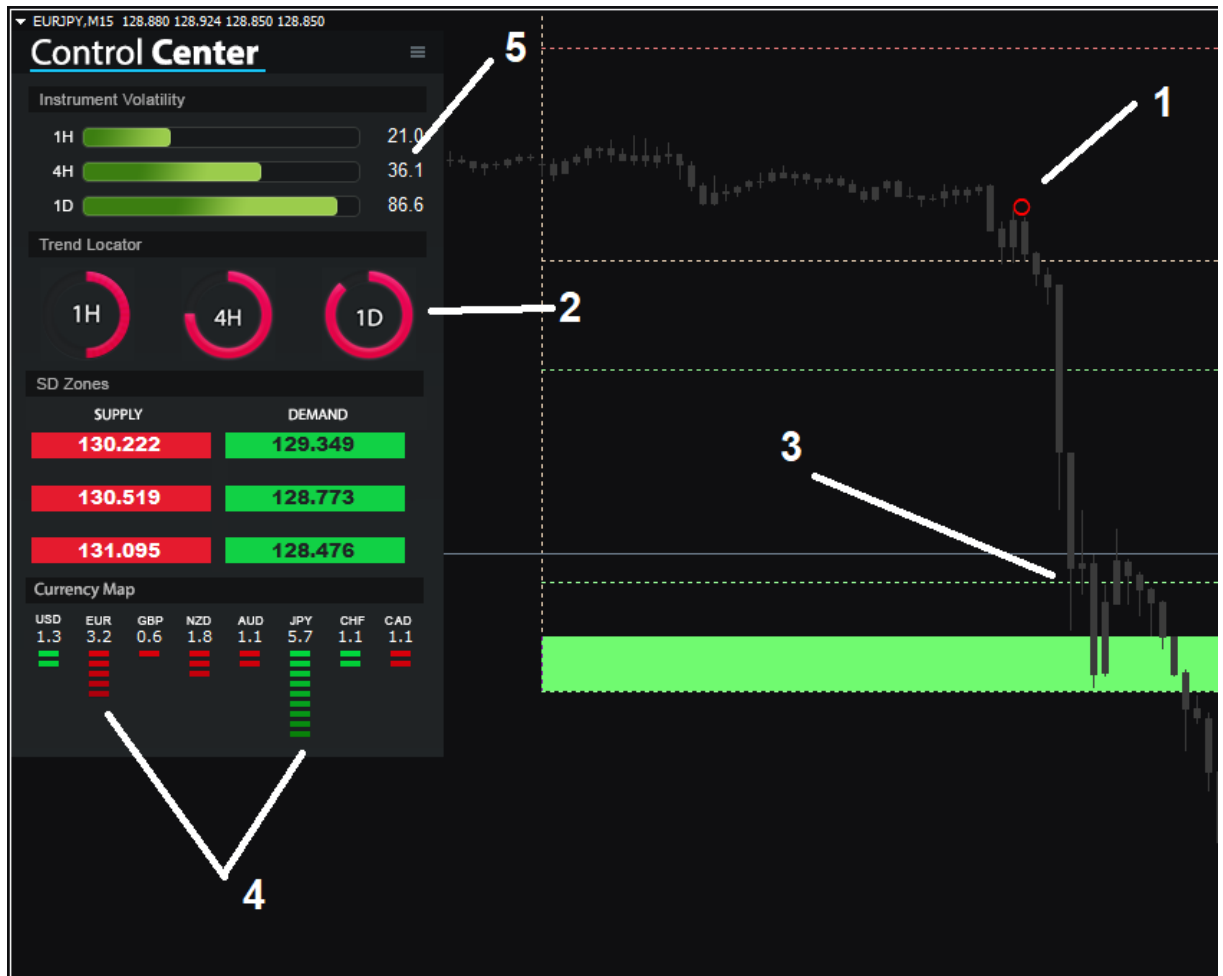
## ADDITIONAL CONFIRMATION



Although even basic analysis is enough for trading as it includes entry filtering and MTF confirmation, some traders may want to get additional information about the trade.

3. Currency Strength and Weakness analysis. Provides easy visual confirmation about the main currencies. If you are looking for a trade on specific pair, you can check if the currency is strong or weak among the rest currencies.
4. S/D levels works similar to support/resistance zones. You can use it as take profit levels for your trades.
5. Pair volatility gives additional information about the pair range on specific TFs. If the pair is moving dynamically green line will be longer or shorter if the pair is in range.

## TRADE EXAMPLE



Here is how typical SELL signal may look like.

Basic analysis:

1. SELL signal
2. ALL three TFs are RED.

Additional features:

3. Use demand level as take profit.
4. EUR is very weak/JPY is very strong.
5. Most TFs provides high volatility.